



NAME / Nom: .....

DATE / Data: .....

## VERTEBRATES AND INVERTEBRATES

*Els vertebrats i els invertebrats*

Animals can be classified as either **VERTEBRATES** or **INVERTEBRATES**.

*Els animals poden ser vertebrats o invertebrats.*

Animals that have a backbone are called vertebrates.

*Els animals que tenen columna vertebral s'anomenen vertebrats.*

Animals that don't have a backbone are called invertebrates.

*Els animals que no tenen columna vertebral s'anomenen invertebrats.*

1. Cut and paste each animal in the correct category:  

VERTEBRATES

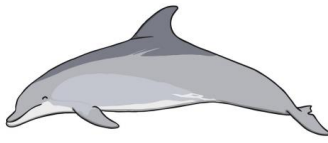
INVERTEBRATES

--	--

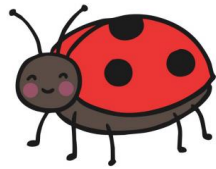
VERTEBRATES

INVERTEBRATES

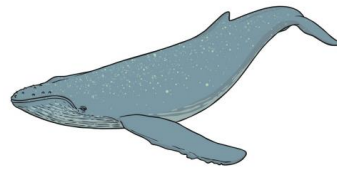
--	--



dolphin



ladybird



whale



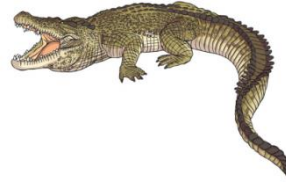
lion



slug



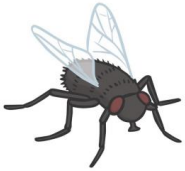
butterfly



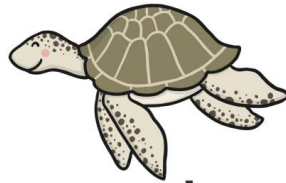
crocodile



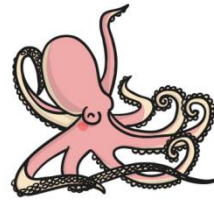
crab



fly



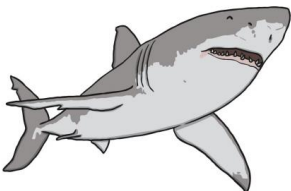
turtle



octopus



snake



shark



worm



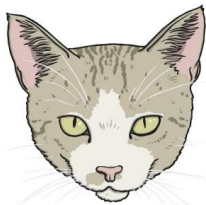
jellyfish



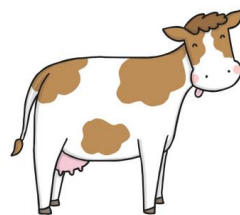
snail



spider



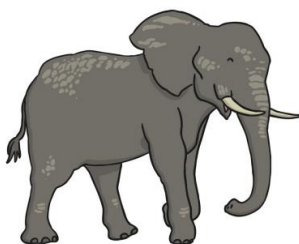
cat



cow



dog



elephant

